

図1 現状伽藍配置図





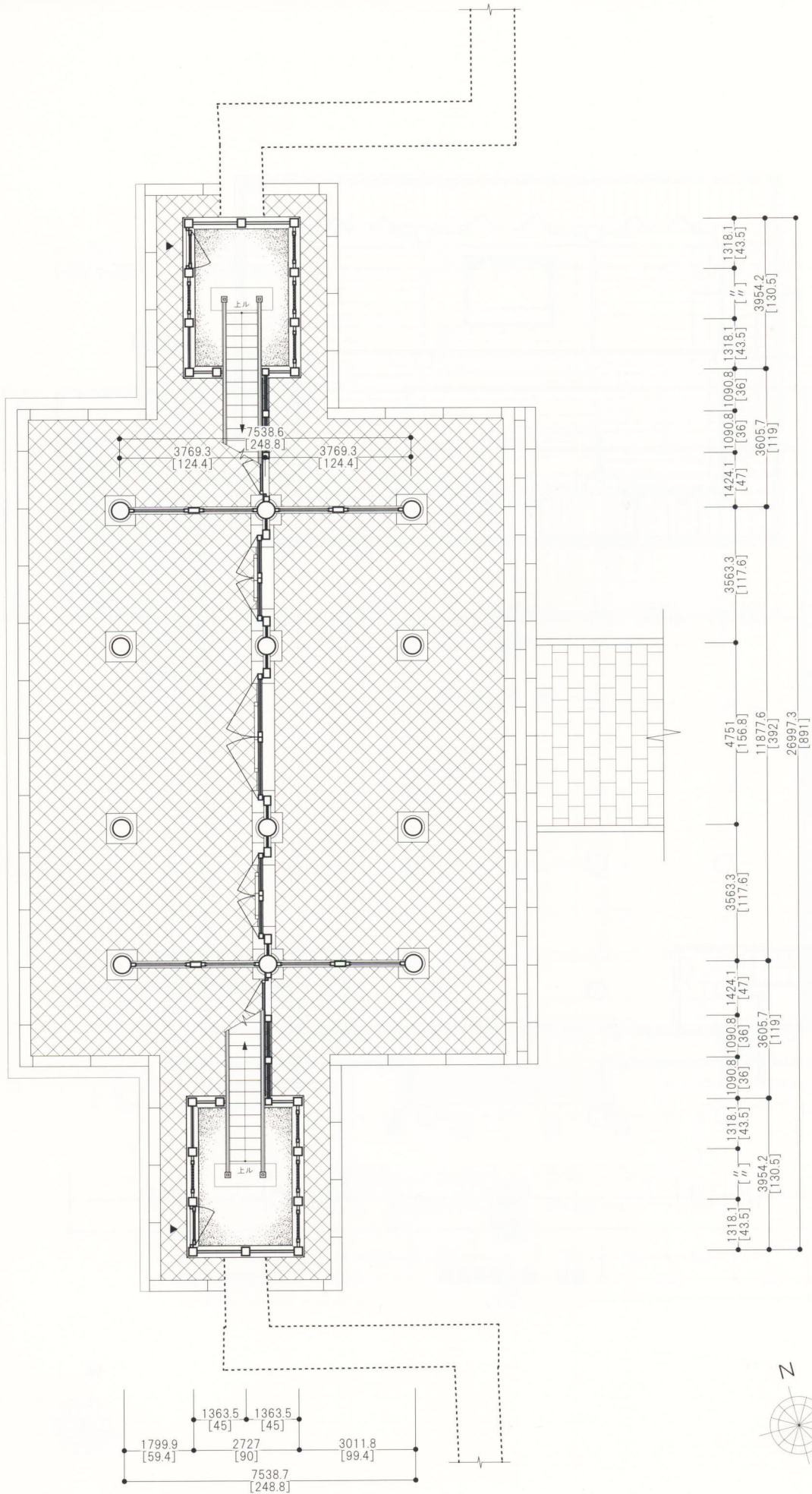
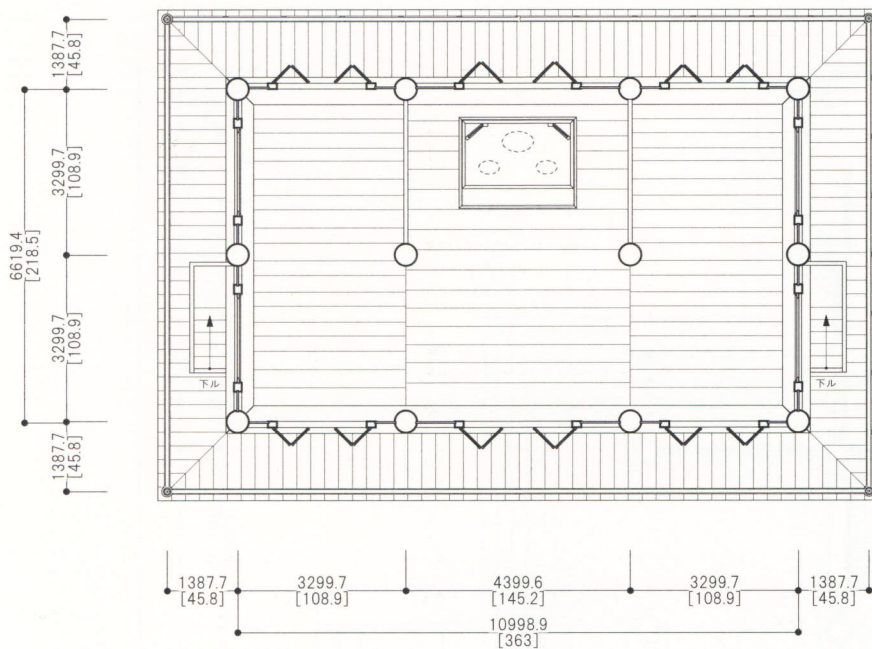
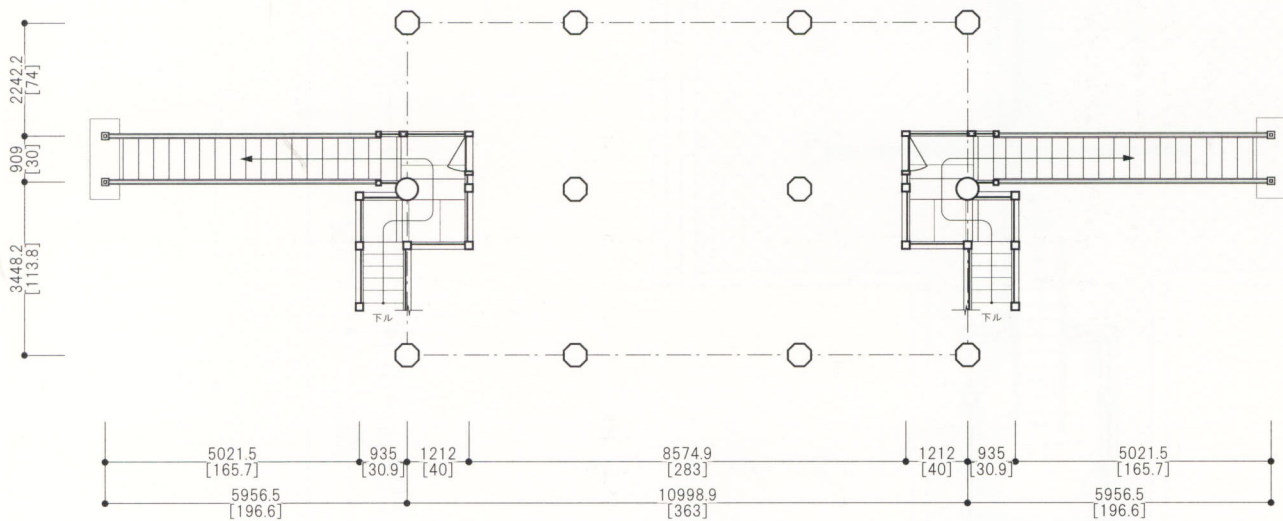


図2 山門一階平面図



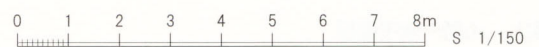
二階平面図



階段・踊り場平面図



図3 山門階段・踊り場・二階平面図





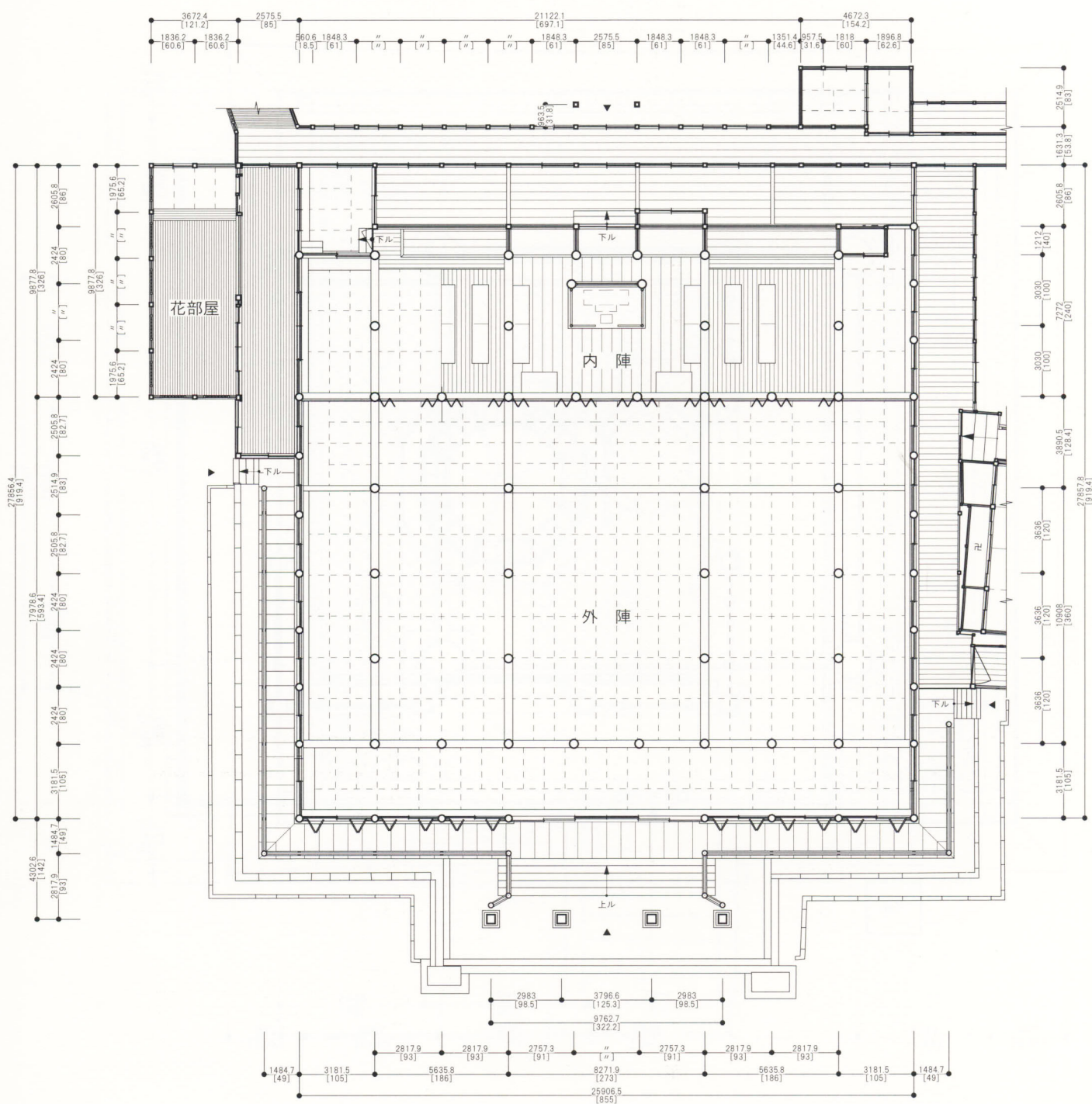


図4 本堂平面図

0 2 4 6 8 10 12m S 1/250

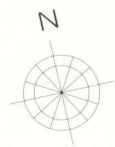
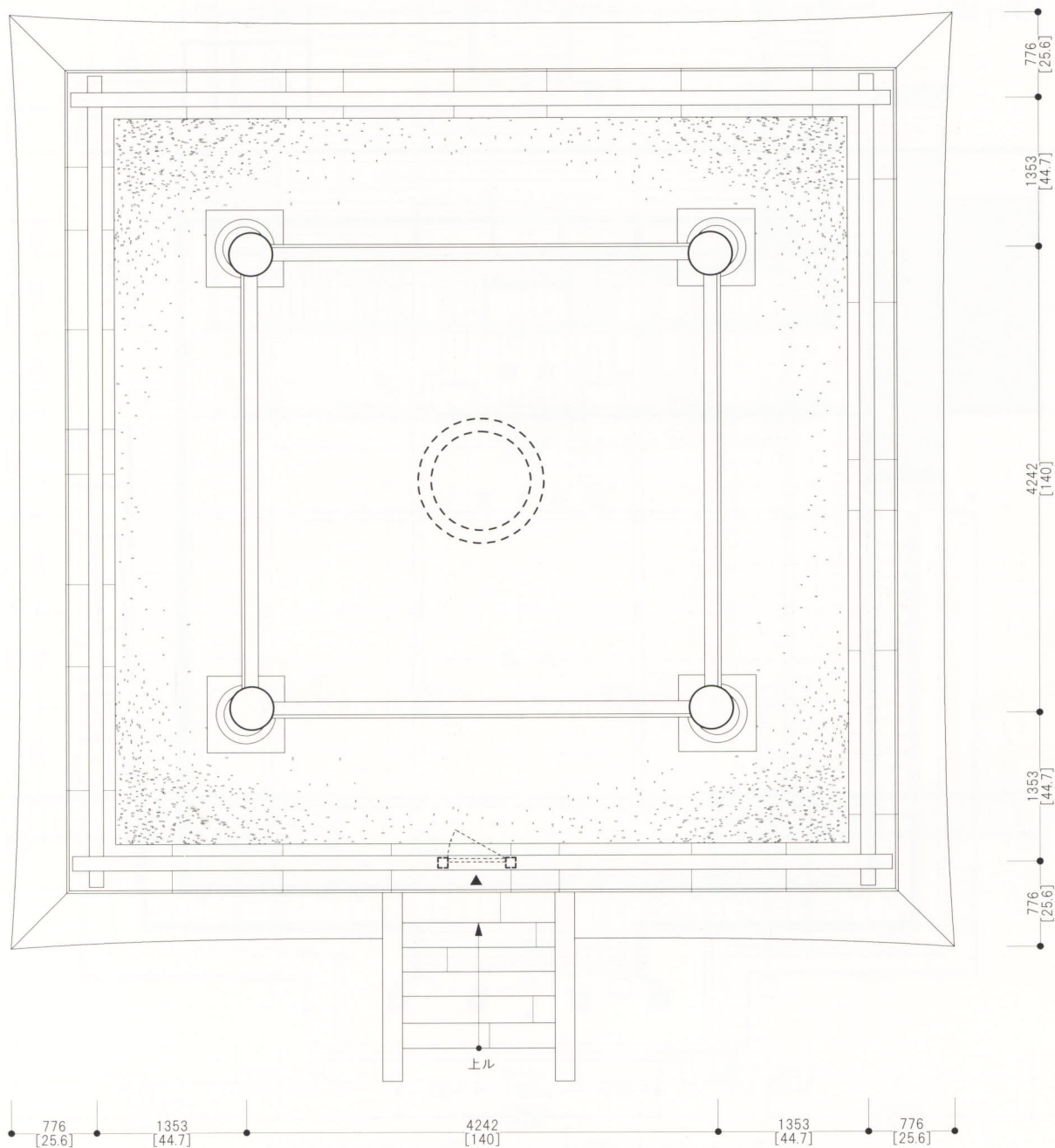


図5 鐘楼平面図

0 1 2 3m S 1/60



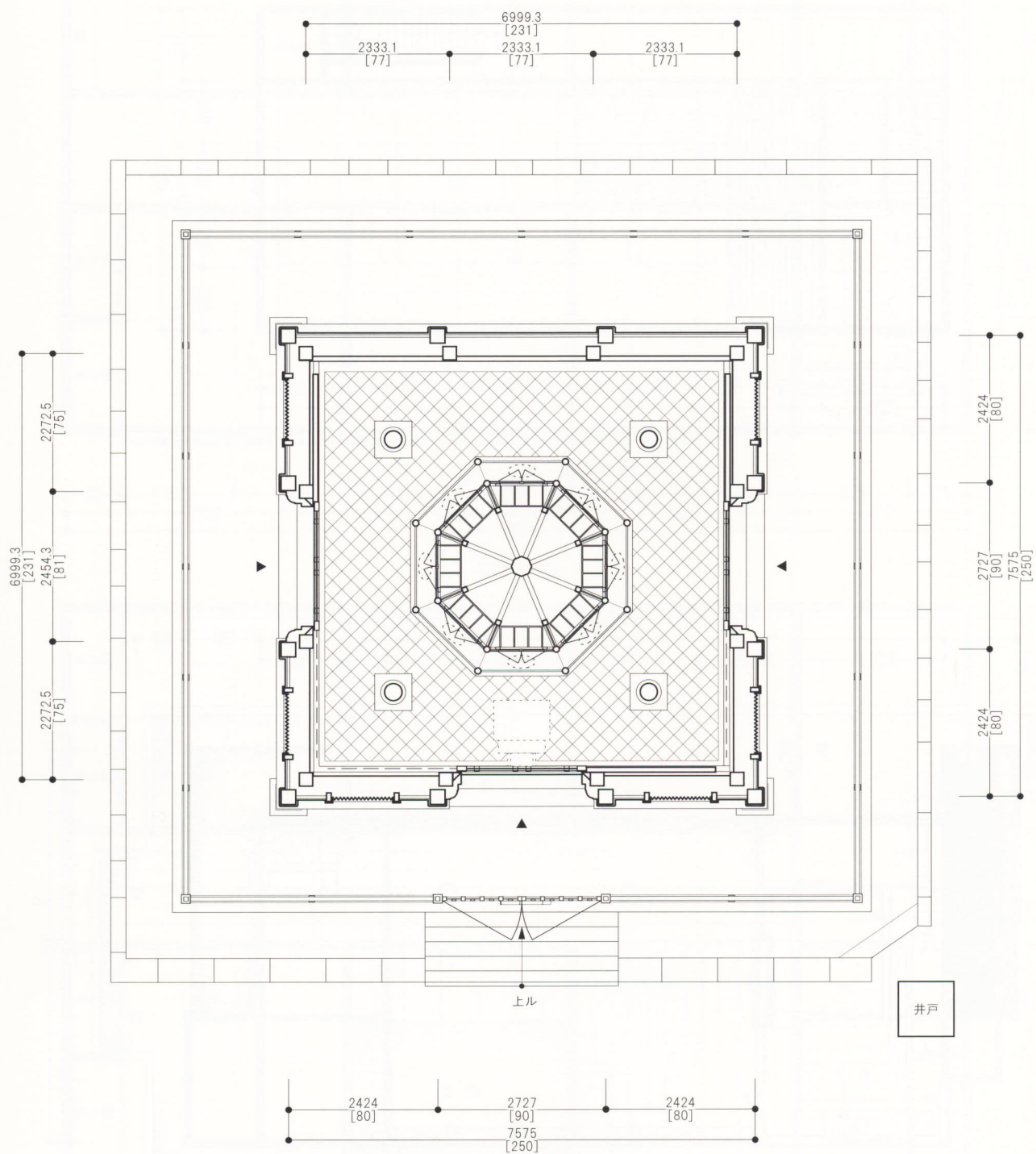


図6 経蔵平面図







- 193 -

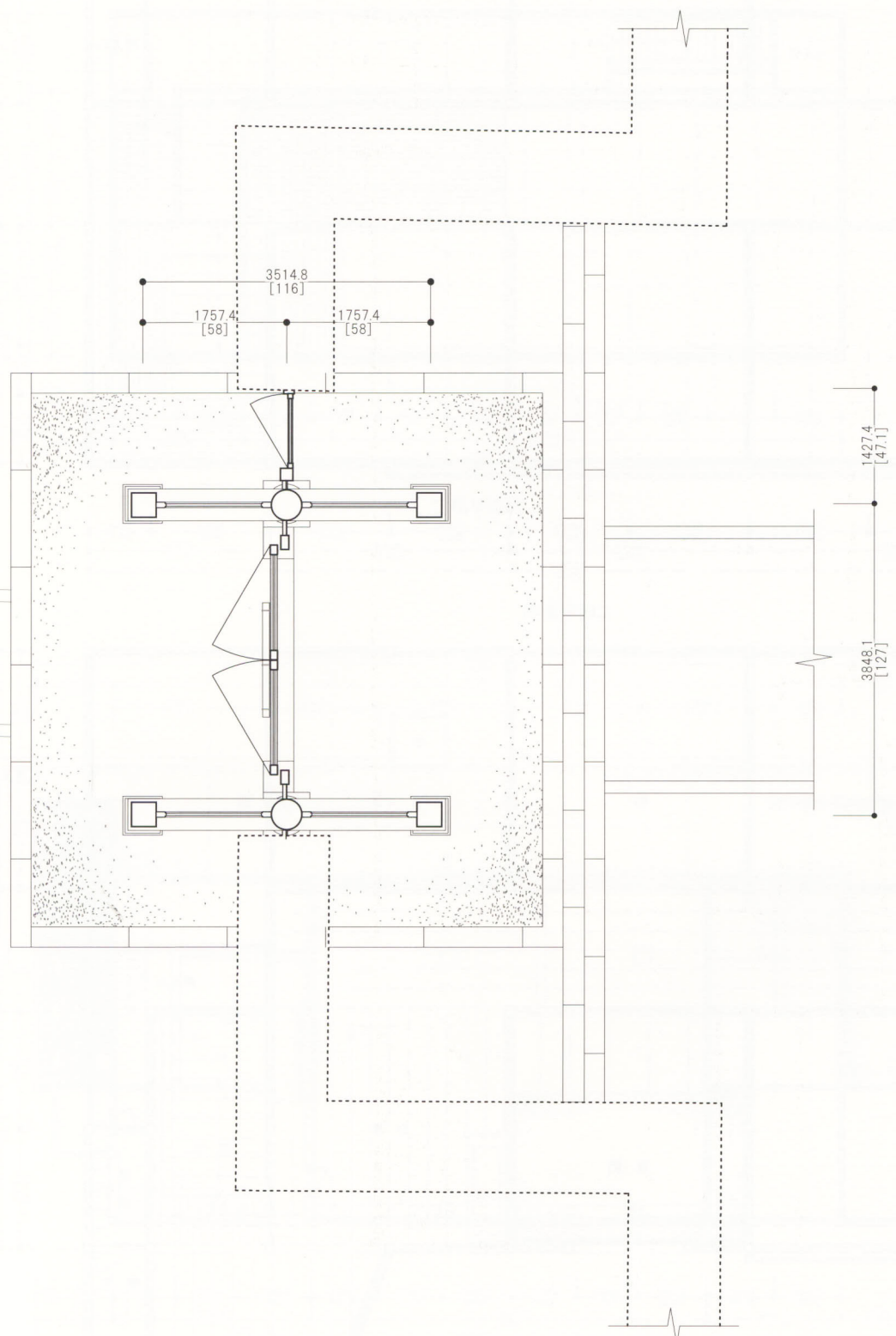


図9 式台門平面図





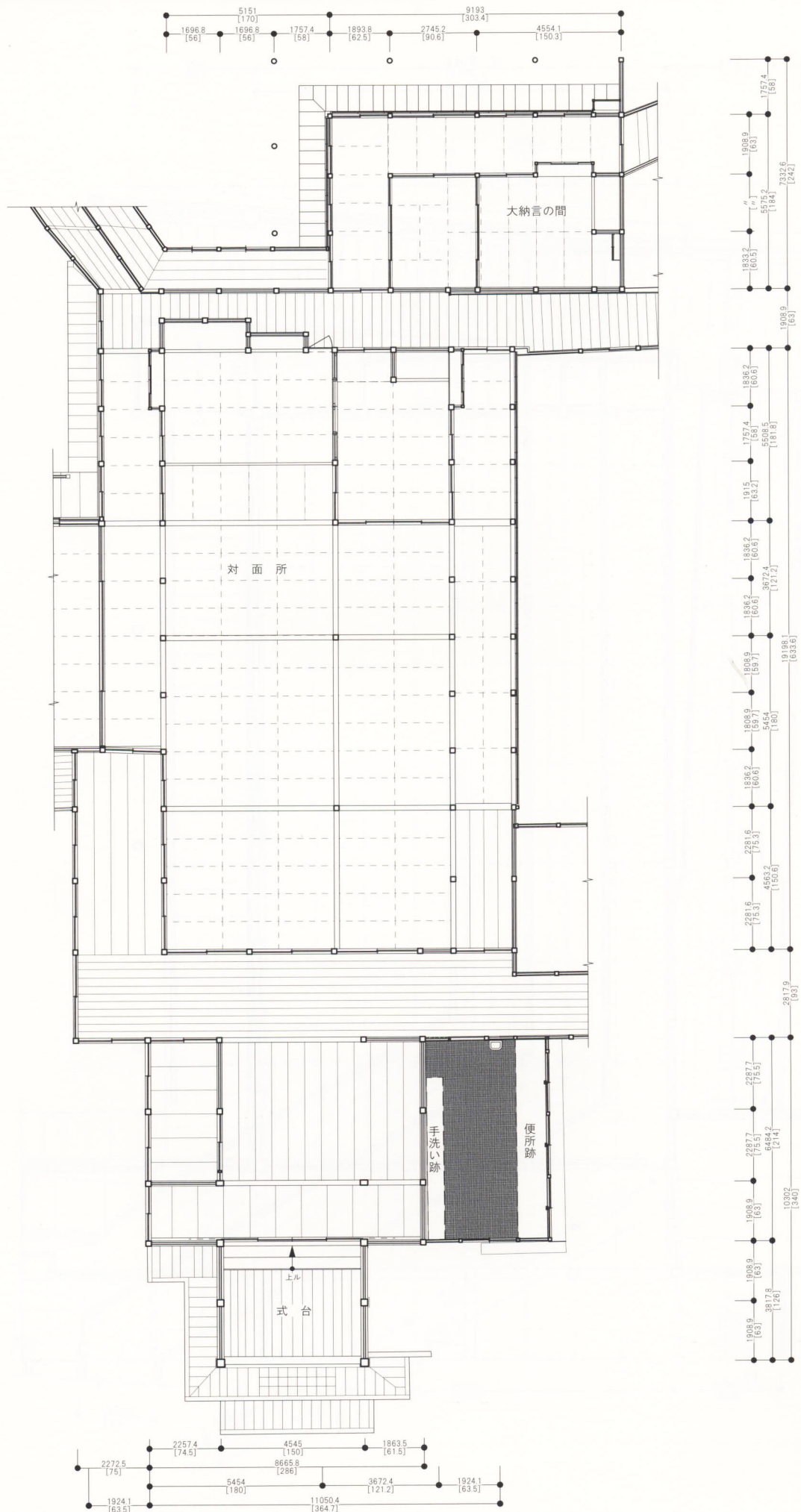


図10 式台・対面所・大納言の間平面図





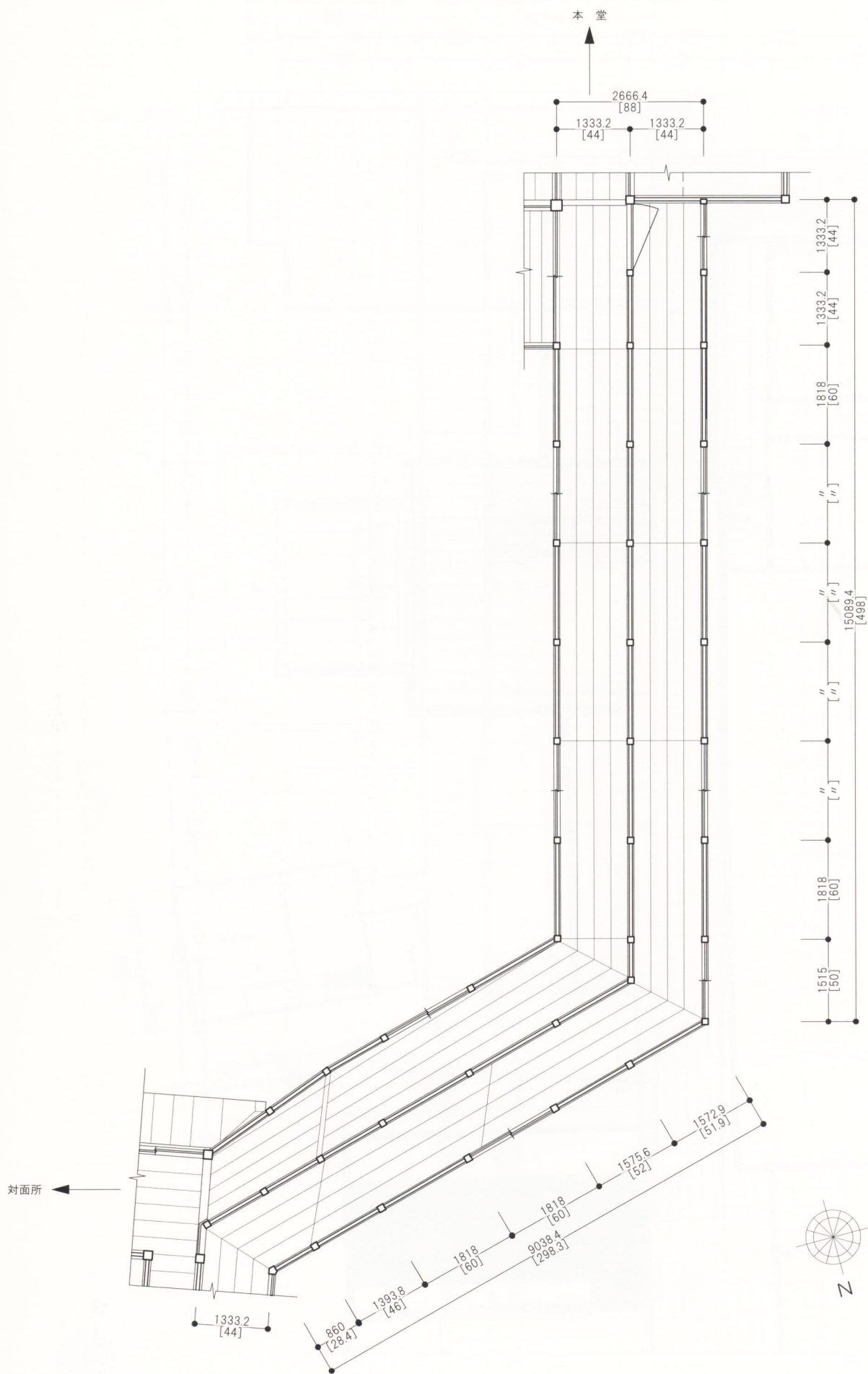


图12 本堂廊下平面図

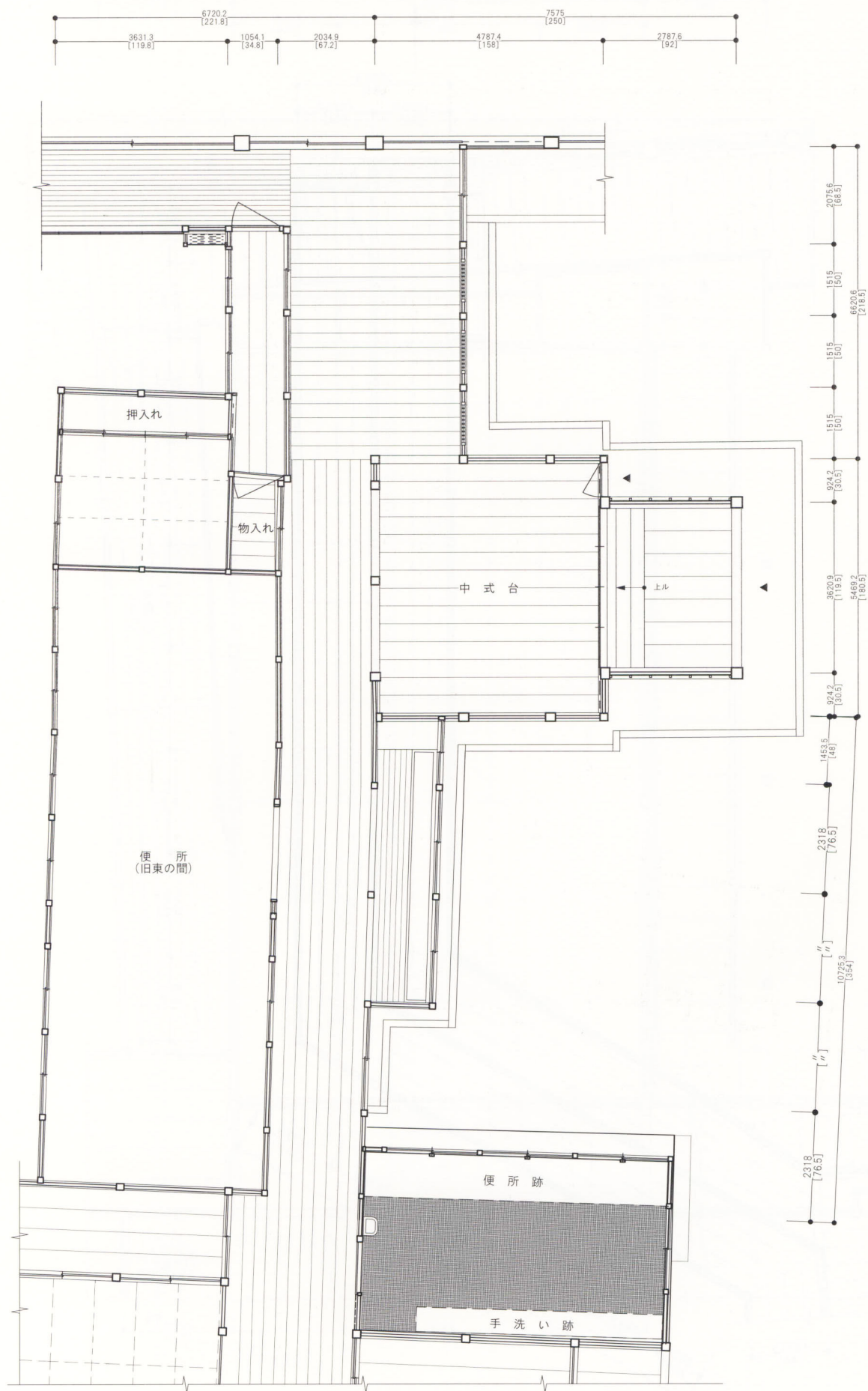


図13 便所(旧東の間)・中式台平面図

0 1 2 3 4 5 6m S 1/120



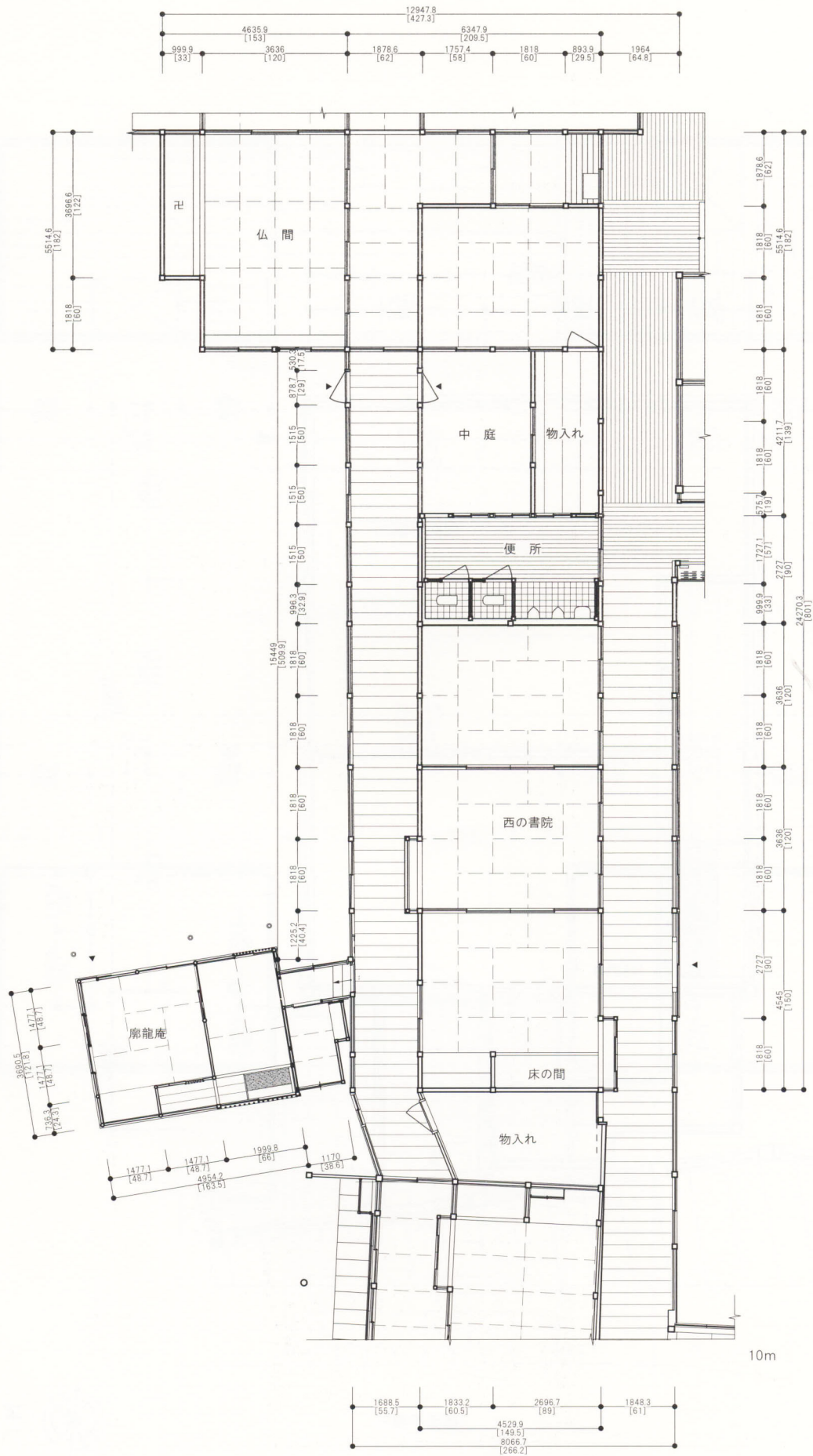


図14 西の書院平面図

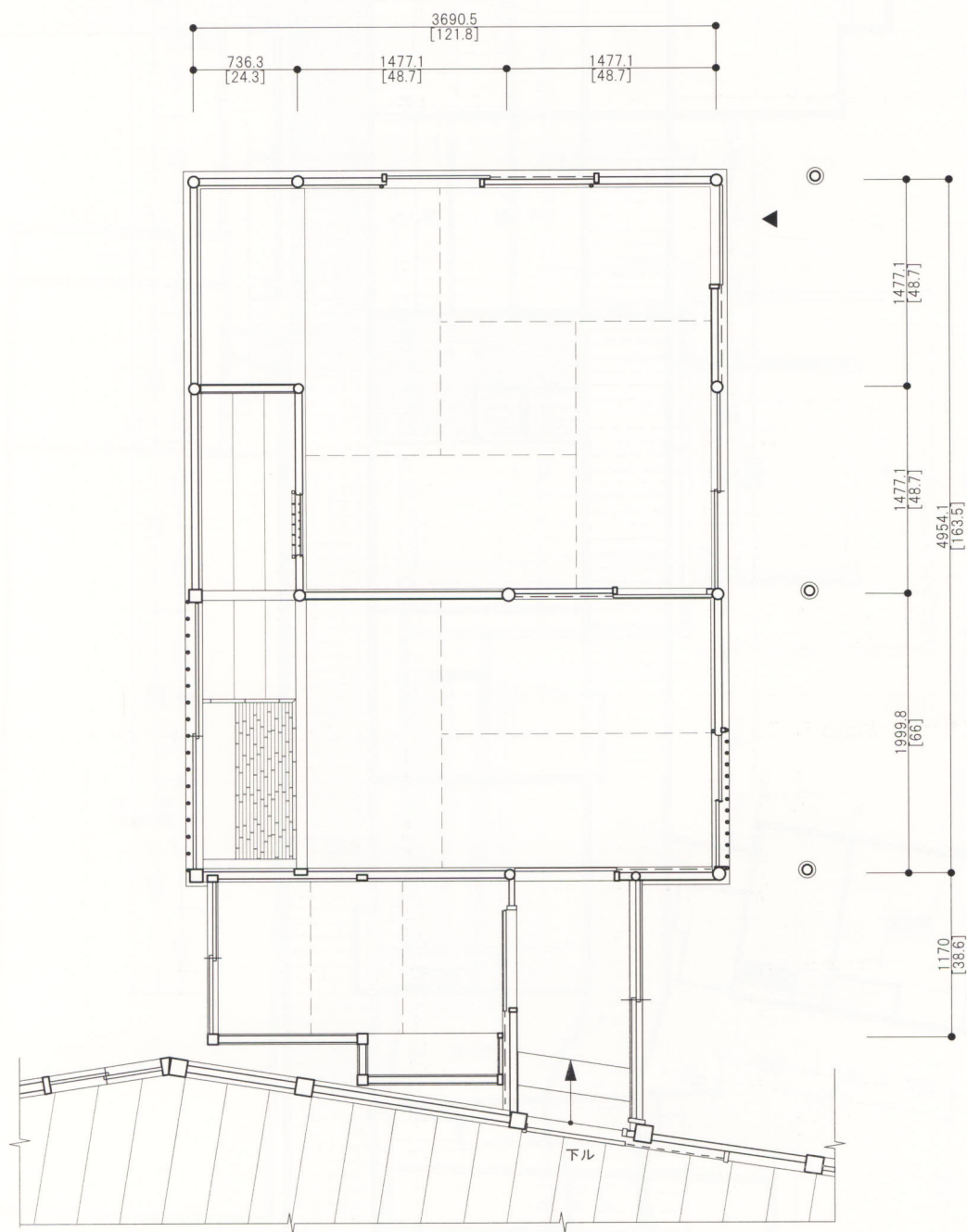
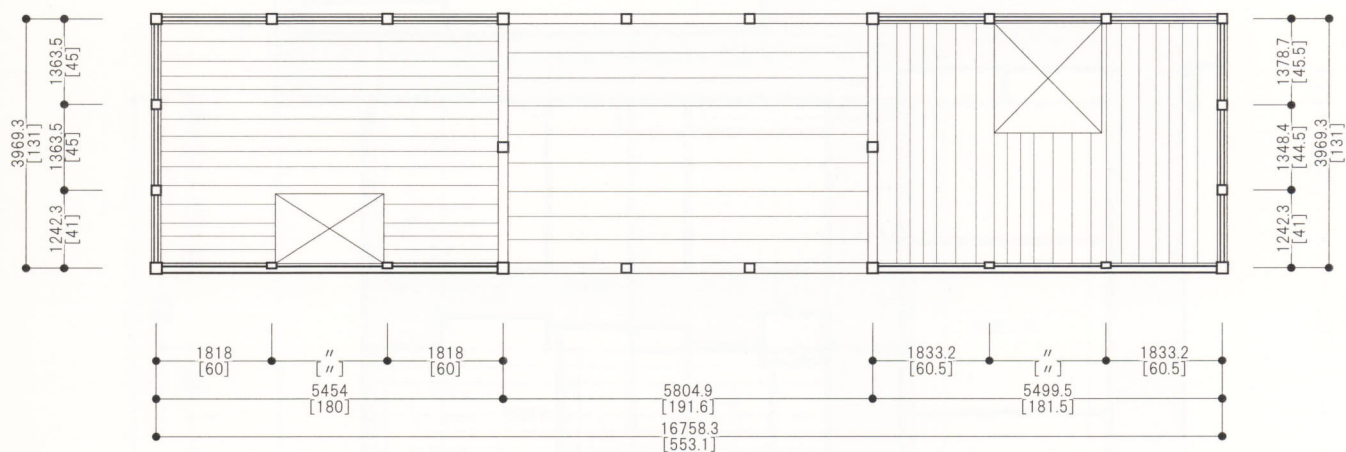


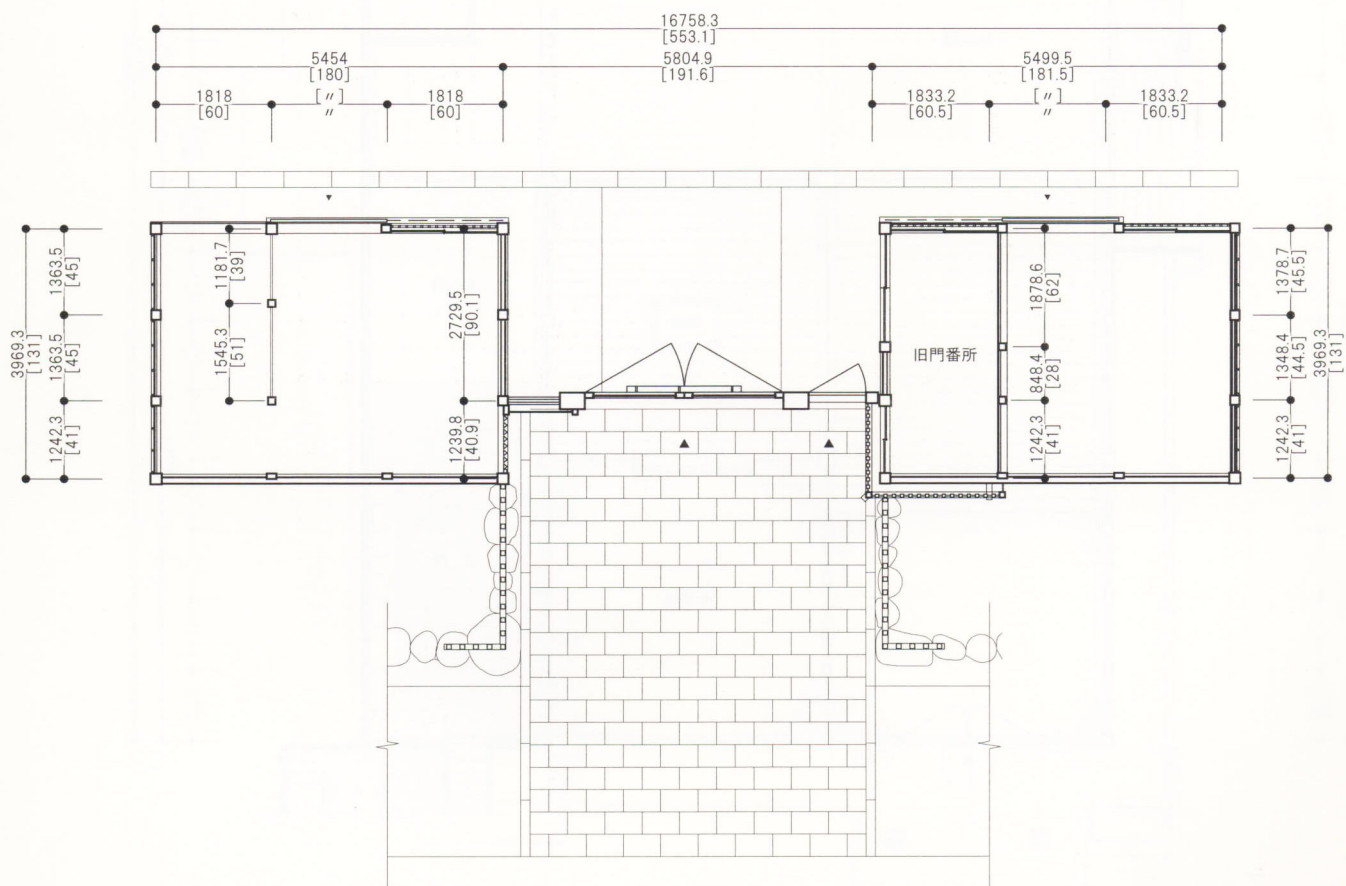
図15 茶室（廓龍庵）平面図







二階平面図



一階平面図



図16 台所門平面図







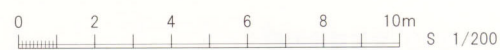
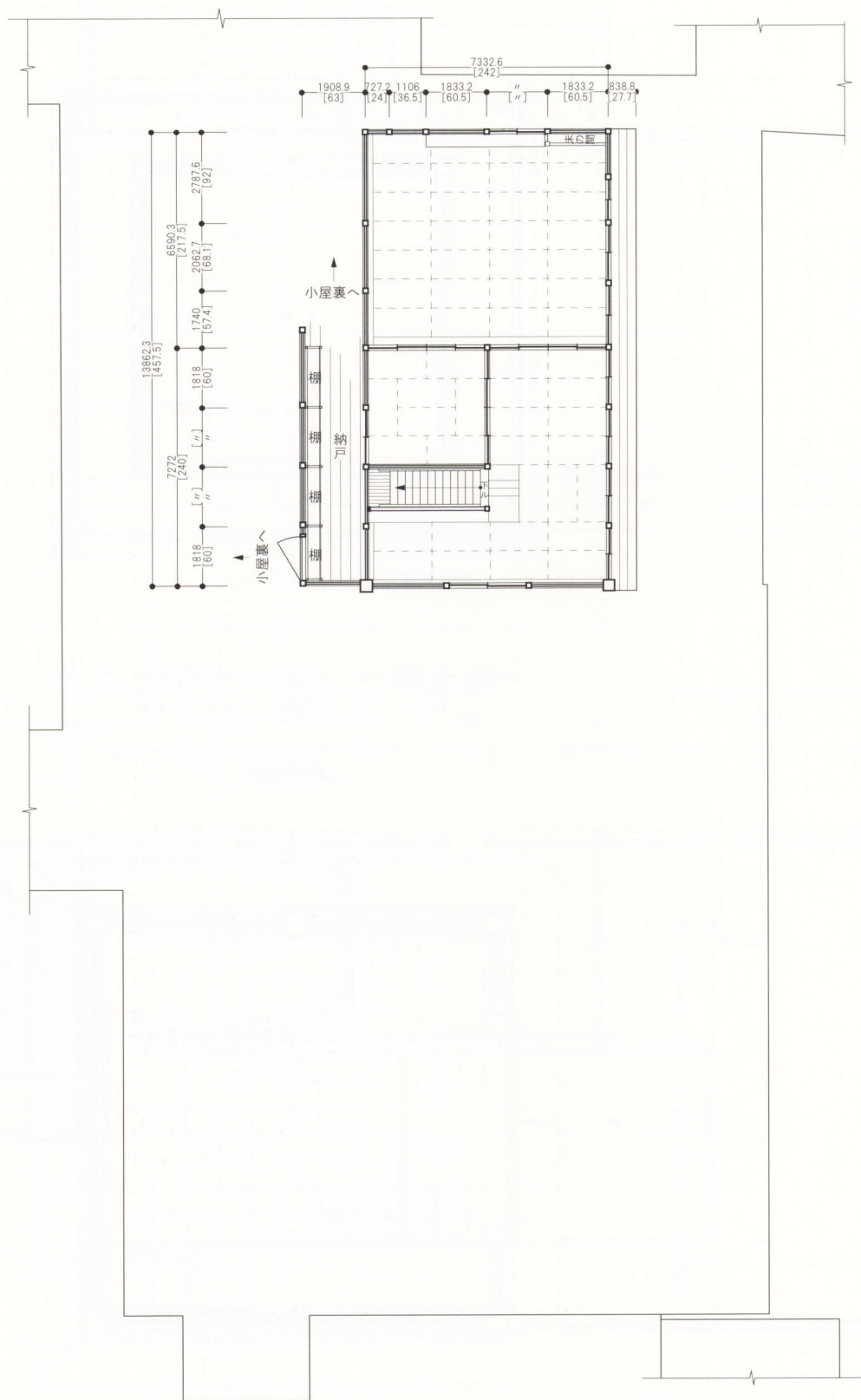
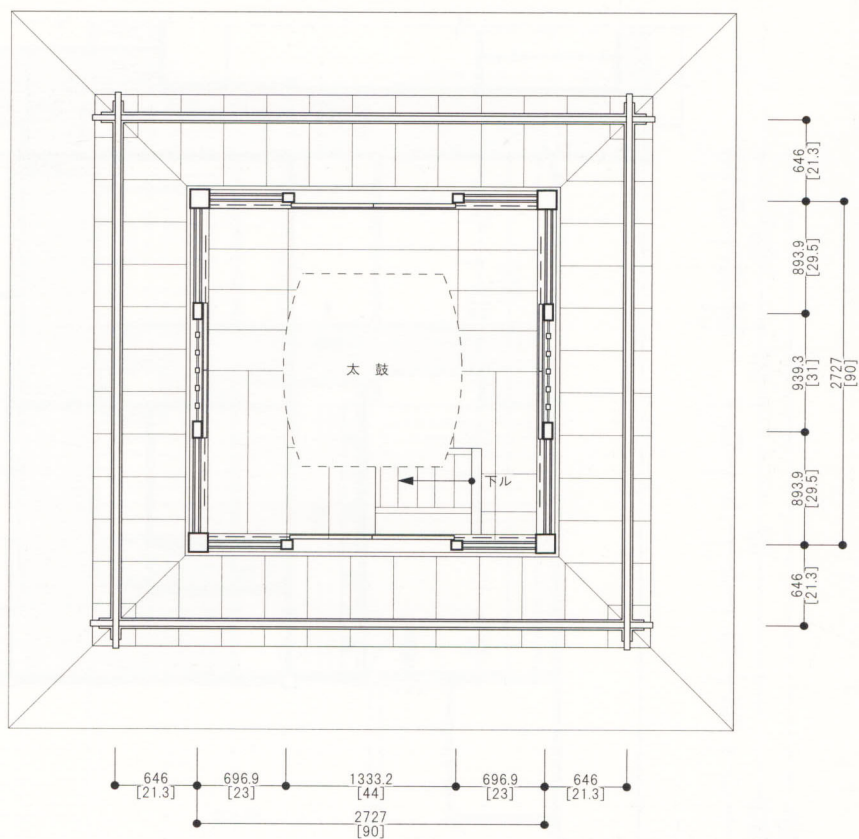
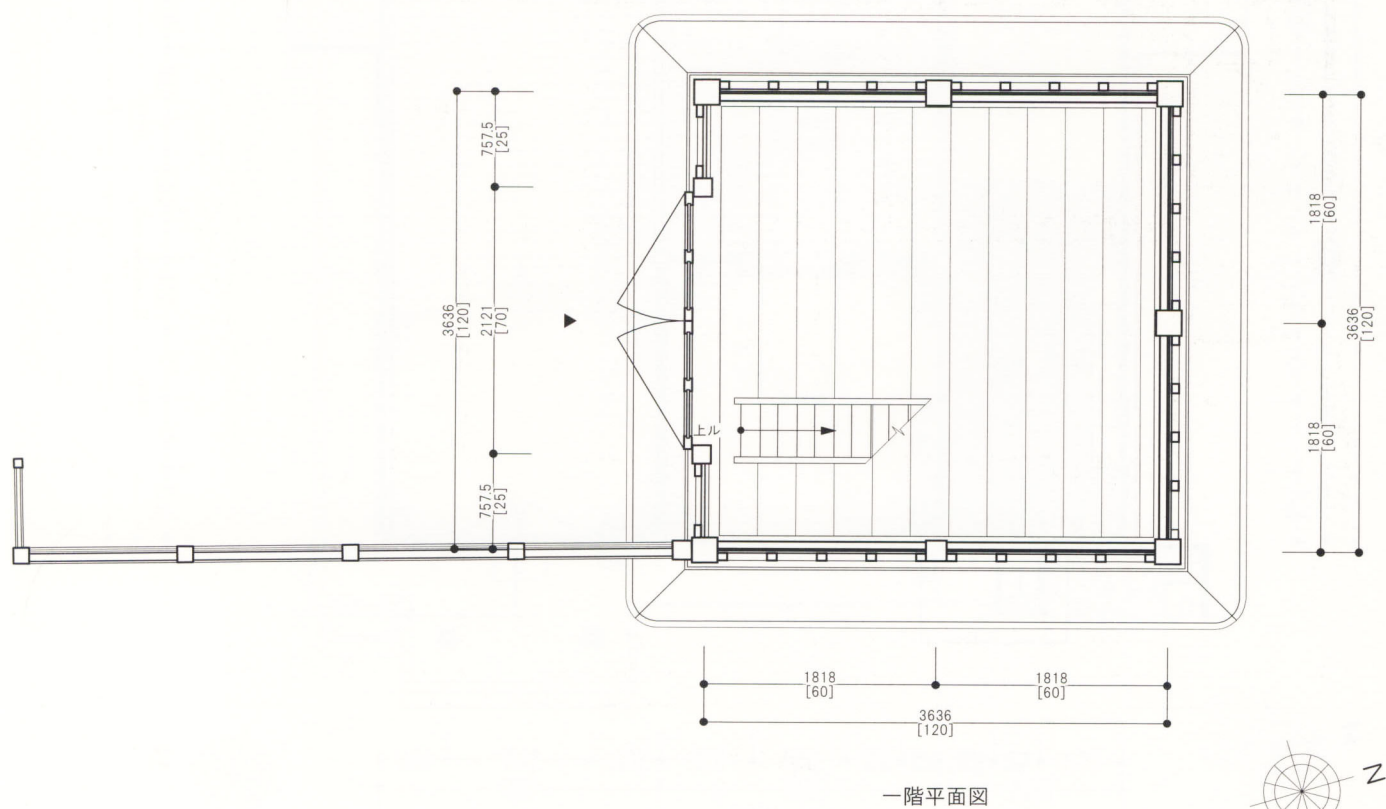


図18 庫裏二階平面図



二階平面図



一階平面図

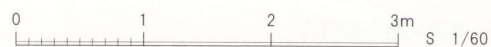
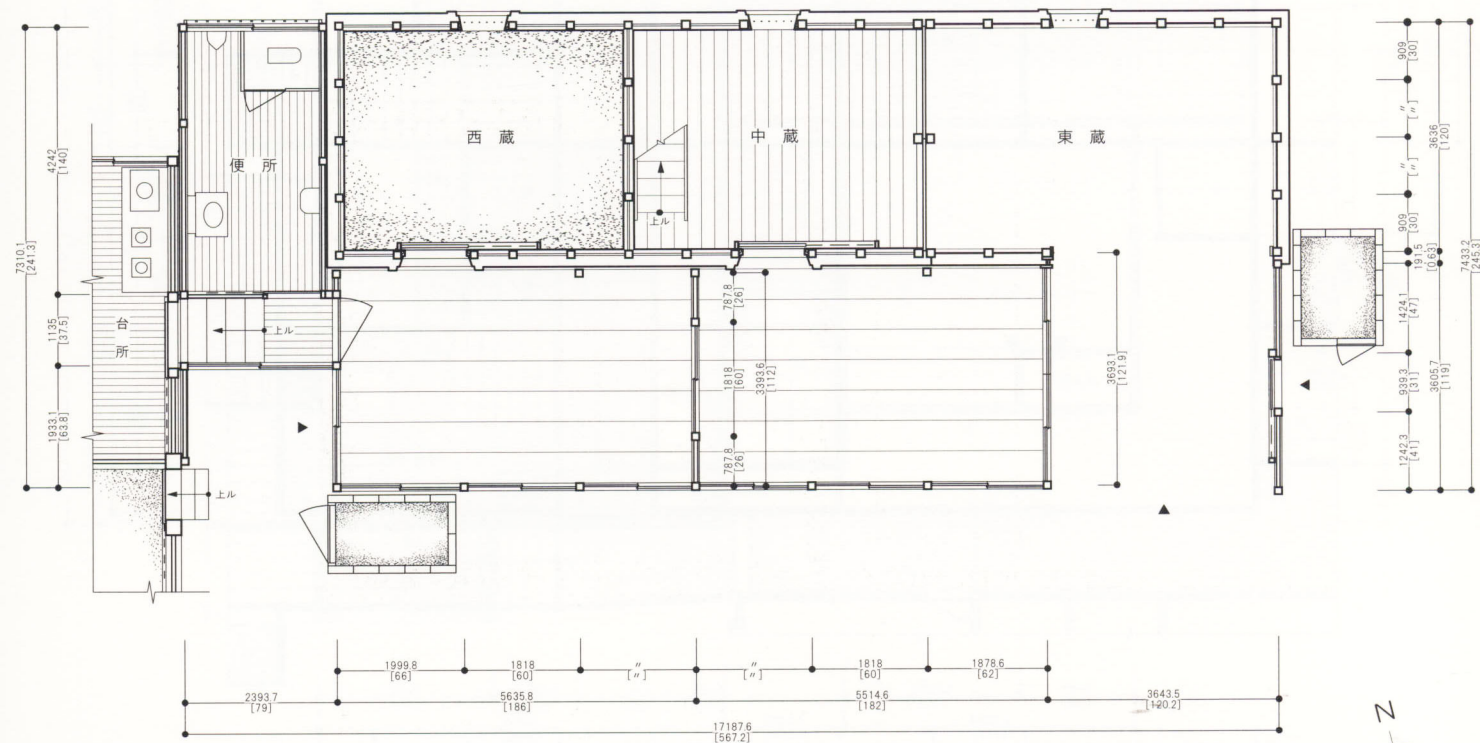
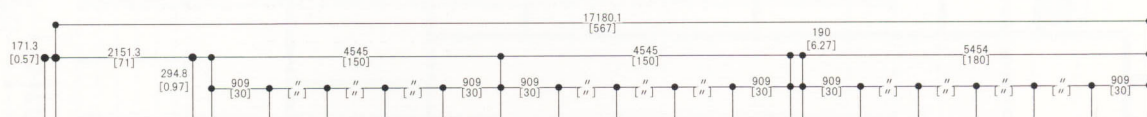
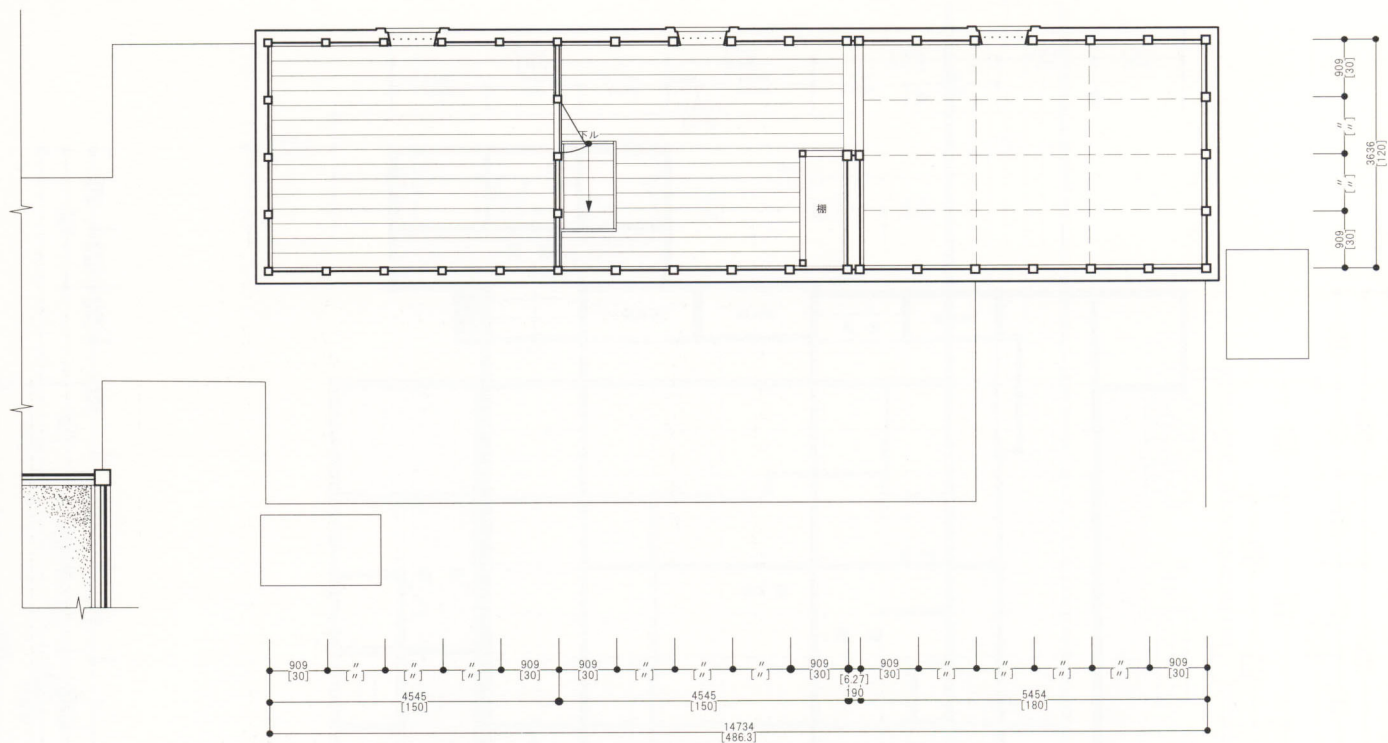


図19 太鼓楼平面图

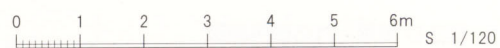




一階平面図



図20 台所前土蔵平面図





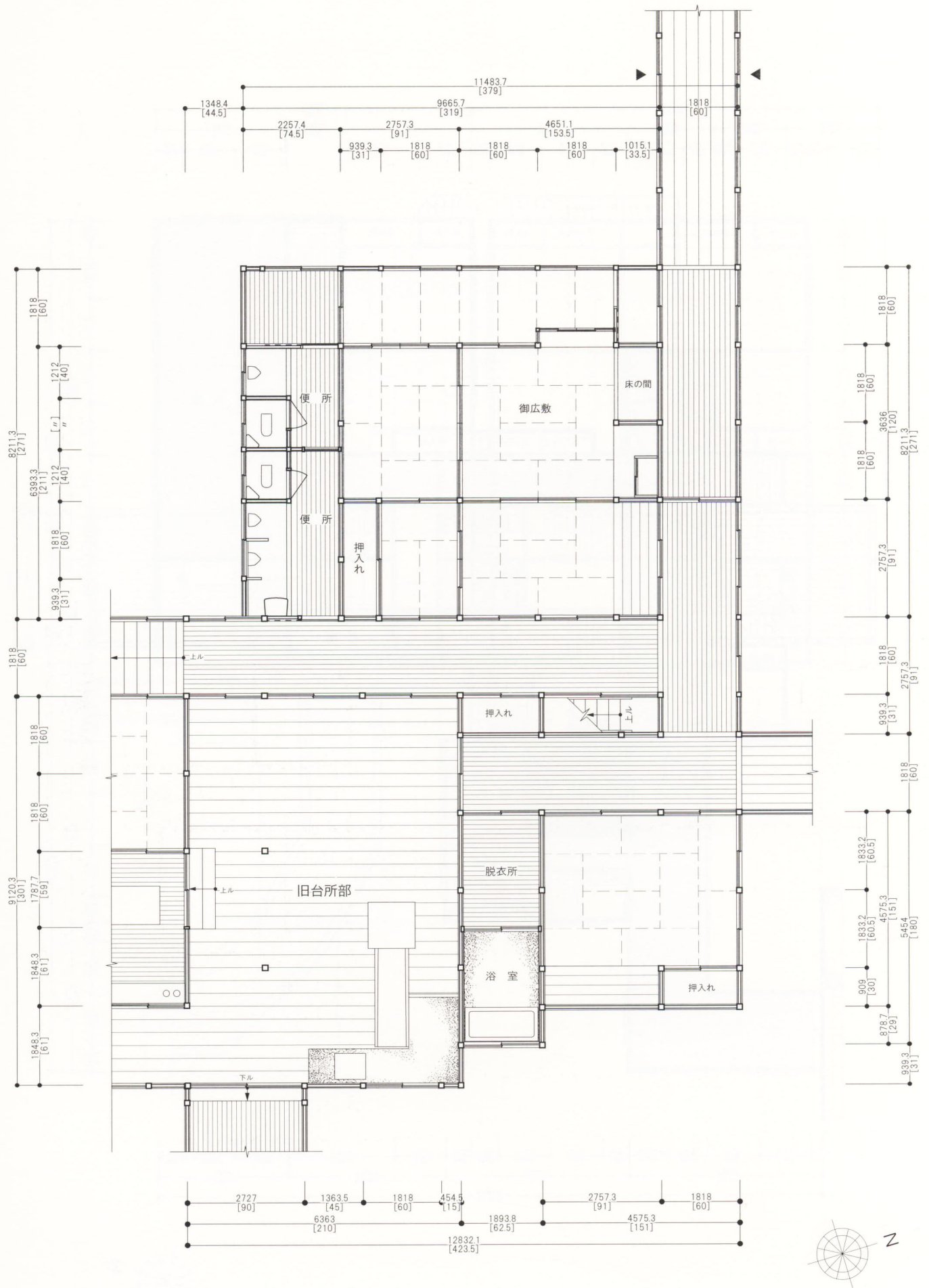


図22 御広敷平面図



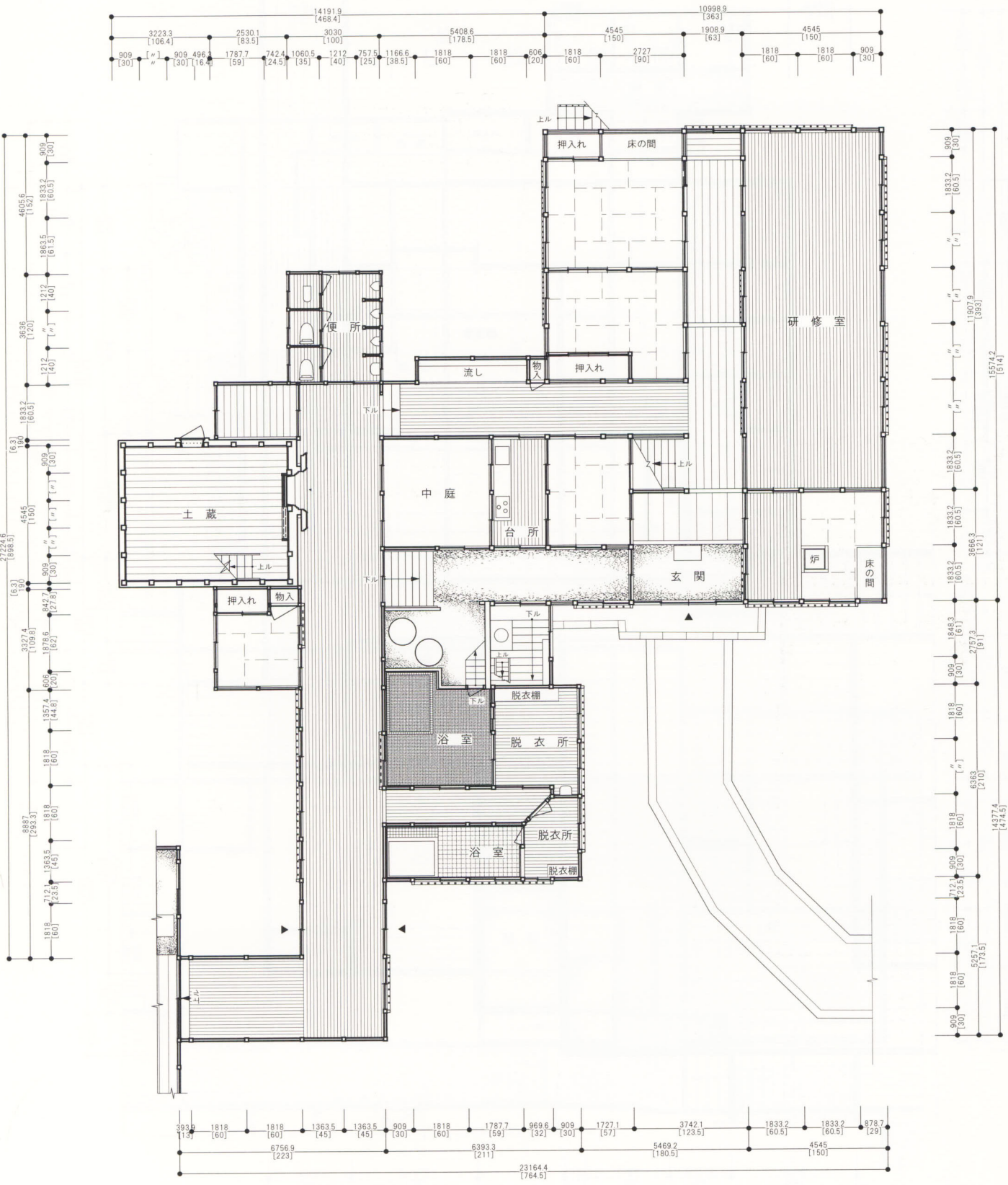


図23 研修道場一階平面図









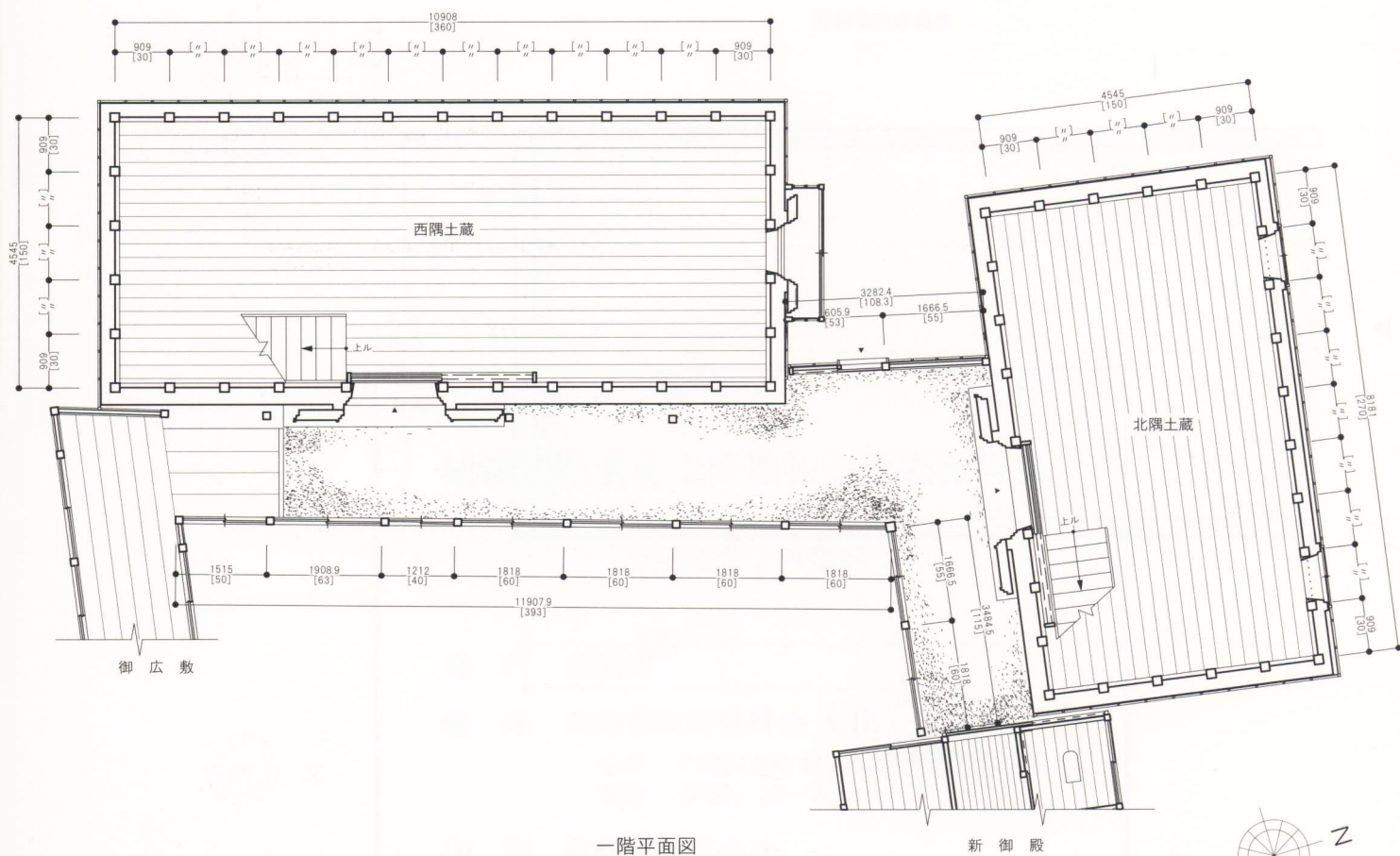
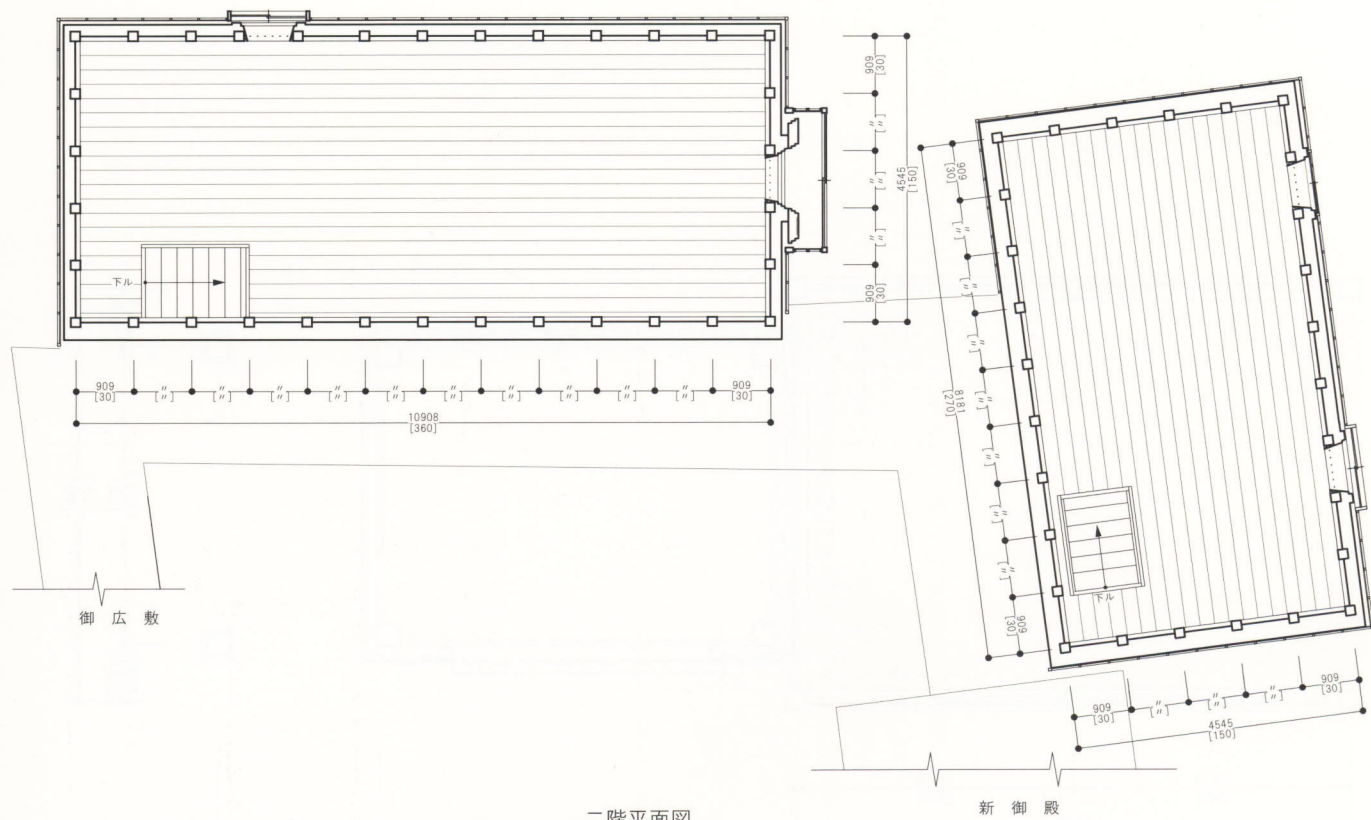
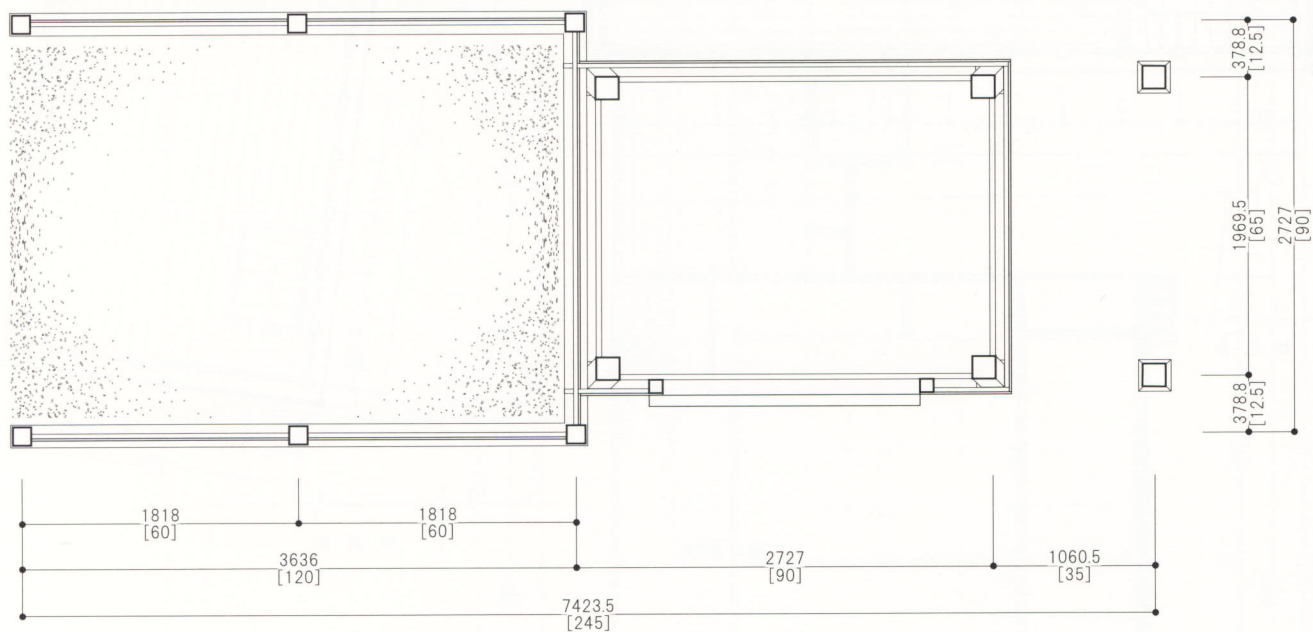
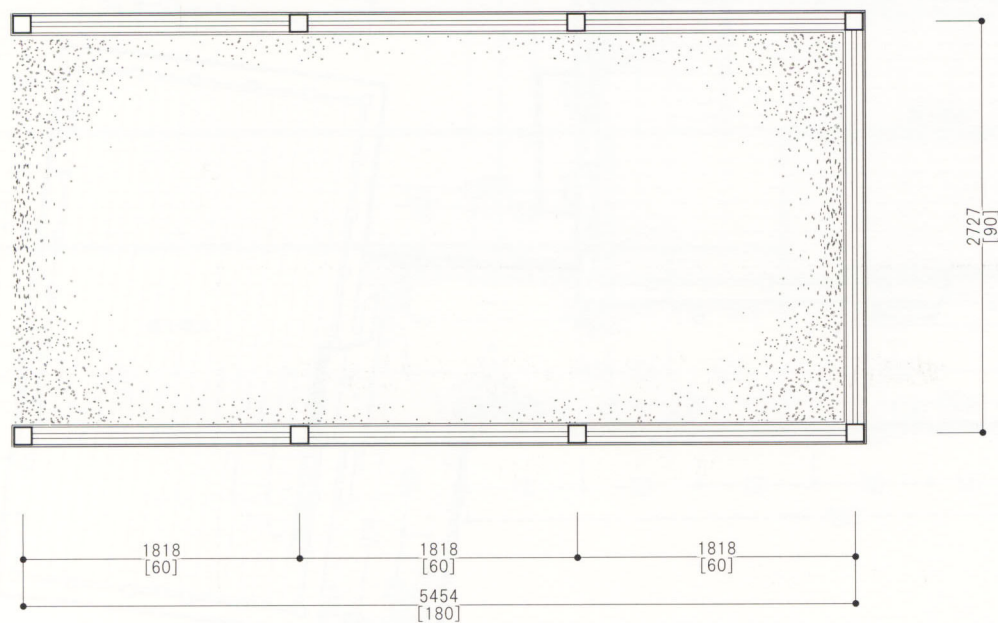
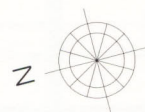


图26 土蔵平面図





東側車庫平面図



西側車庫平面図

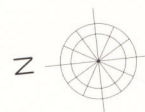


図27 車庫平面図

